



FOR LEASE

PALM BARSTOW PROFESSIONAL CENTER



- High profile location; close to Fig Garden Village
- Competitive lease rate; generous tenant improvements available
 - Approximately 1,793 sq. ft.
- Excellent visibility with Palm Avenue signage

For Additional Information Please Contact:

GARRY OWENS

gjo@earthlink.net

CA DRE#: 00800036

JUSTIN TANCREDI

justin@russellgsmithinc.com

CA DRE#: 01372876

Russell G. Smith, Inc.

8080 North Palm Ave. Suite 207

(559) 449-2424

Property Information

Available Space: 5424 N. Palm Ave., Suite 106:

- ◆ Approximately 1,793 square feet
- ◆ \$1.35 per square foot per month
- ◆ Available Immediately

**Tenant is responsible for utilities and janitorial services*
**3% annual increases*

Description: 5424 N. Palm has a functional floor plan with multiple private offices along Palm Ave. Landlord has designed an alternative floor plan, as shown below. Tenant Improvements shall include new paint and carpet.

Location: Palm Barstow Professional Center is a well-maintained garden-style office complex located near Fig Garden Village. Signage along Palm Avenue is available.

GARRY OWENS

gjo@earthlink.net

CA DRE#: 00800036

JUSTIN TANCREDI

jtancredi@russellsmithinc.com

CA DRE#: 01372876

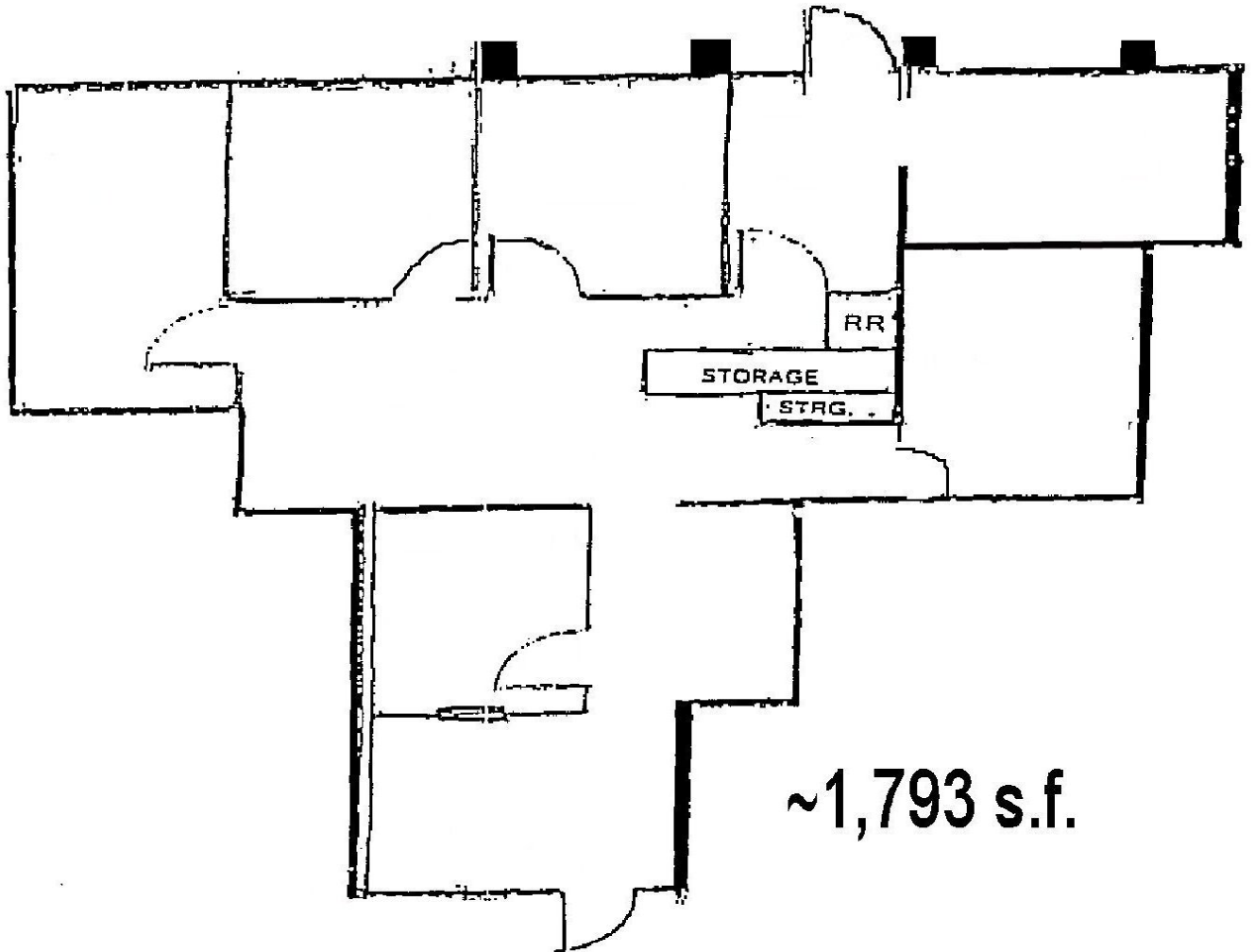
Russell G. Smith, Inc.

8080 North Palm Ave. Suite 207

(559) 449-2424

FLOOR PLAN

5424 N. Palm
Suite 106

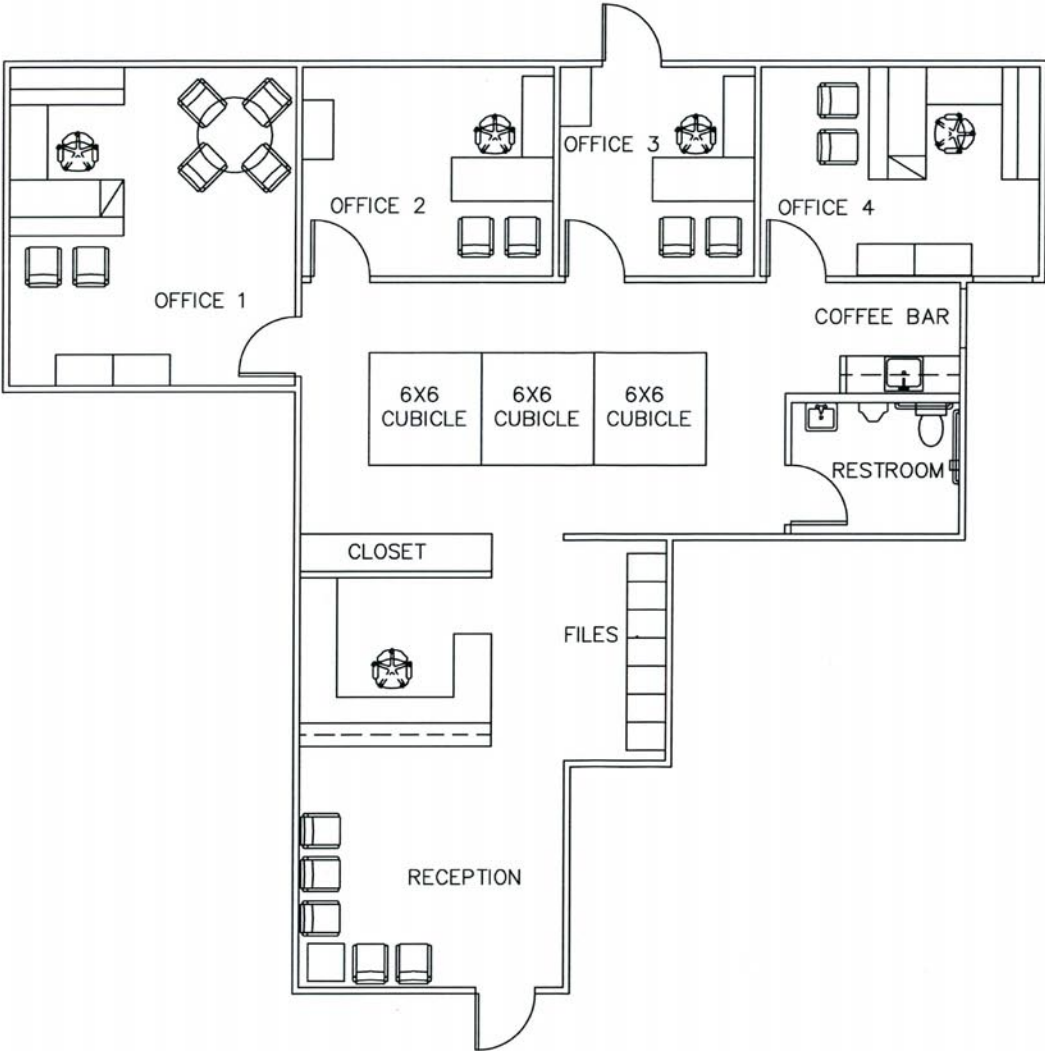


~1,793 s.f.

POTENTIAL FLOOR PLAN

5424 N. Palm Ave., Suite 106

OPTION A



AERIAL VIEW



MAP VIEW

